



## redlands ART ASSOCIATION

Creativity starts **here.**

### Art Center & Sales Gallery

215 East State Street

Redlands, CA 92373

**909-792-8435**

[www.redlands-art.org](http://www.redlands-art.org)

Member submissions are welcome and  
due the First Thursday of the Month.

Please email submissions to:  
[newsletter@RedlandsArtAssociation.org](mailto:newsletter@RedlandsArtAssociation.org)  
or use the form on our website at:  
[http://redlands-art.org/newsletter/  
newsletter-submissions/](http://redlands-art.org/newsletter/newsletter-submissions/)

# JANUARY 2016

### 2016 Take-In Dates & Themes

**January 15** (7 weeks): Asian Spice

**March** take in (March 4 take down) MMM

**April 1** (6 weeks) Potpourri (Flower Show  
April 16-17)

**May 13** (4 weeks) Abstract Expressions

**June 10** (7 weeks) School's Out for Summer!

**July 29** (6 weeks) Faces & Places

**September 9** (6 weeks) Southwest

**October 21** (6 weeks) The Way We Were

**December 2** (6 weeks) Holiday Celebration

*Themes are suggestions only.*

*All take-in dates are on a Friday, 9am-7pm*

## NEWS FROM OUR FEARLESS LEADERS:

◆ **YOUR PRESIDENT: LIZ COVIELLO**



Thank you all for making the RAA Gallery a fabulous place to shop for presents this holiday season. The gallery was full to bursting with our two Featured Artist Shows and everyone's work. It took some juggling but the Hanging Crew did an amazing job displaying everything. We received compliments galore on the show and I hope you all managed to get in and see it. People returned several times to look and make special purchases. Many thanks to Sandy Davies for suggesting we offer a gift wrapping service this year, it was so appreciated.

I also wanted to thank everyone who filled the Christmas Tree with unique ornaments and gifts. You were all complimented on the art for sale on the tree. The Christmas Tree decoration swap was small but fun. And our Christmas Decoration Show within a Show was a wonderful extension to the Christmas Tree. Thank you all.

Many thanks to everyone who brought in toys and food for Family Services, it was so generous at a busy and expensive time of year. I think we will be running this again next year.

We are well into the New Year, with new Featured Artists; the Photography Show within a Show; the "Asian Spice" theme for the first show of the year in the gallery; the Multi Media Mini Show in March and The Garden Tour in April.

With all the excitement of Christmas it was sad to learn of the passing of Margaret Thielemann and Marshall Taylor, son of Anne Taylor who some of you will remember. Our thoughts are with the families at this time.

Wishing you all a prosperous 2106, may it be full of art and inspiration.

— *Liz Coviello, RAA President*



### Take-In – Friday Jan 15

"Asian Spice" is the theme for the next show in the Gallery. Please remember to come in and collect your unsold pieces from the Holiday Show and The Christmas Tree. We have no room to store uncollected work and I am always scared a piece will get damaged. If you are taking art out of the gallery, don't forget to sign it out of the inventory book. The Take-In sheet can be found on our website on the forms page underneath the "Friends of RAA" tab

Opening hours 9 am – 7 pm with the last Take-In at 6.30 pm.

### Renewal time for Friends of Redlands Art Association.

Yes, it's that time of year and many of you will want to renew at Take-In. There will be a card table at Take-In, the East Gallery, to complete the Friend of Redlands Art Association form and sign a new Gallery Agreement before coming to sign up for volunteer hours and pay.

Also, you can pay for membership online using a credit card, go to this URL: <http://redlands-art.org/friends/friends-of-raa-form/>

Or download and fill out a PDF "2016 Friends of RAA Application" on the "Forms" page underneath the "Friends of RAA" tab.

## Multi Media Mini Show — Juried show

### Open to all artists....enter the Multi Media Mini Show!

Get your creative thinking cap on! Get to the studio and make us some art! Art that makes us say, "Wow!" or "Hmmm!"

The MMM Show is open to all California artists and/or RAA members. Artists can submit up to three 3D or 2D pieces. Multi-media means... anything! But Mini means strict size limitation: must fit within a 14.5" cube, including frame and/or base. Fee is \$45/1-2 pieces, \$60 for 3 pieces, for Friends of RAA fee is \$30/1-2 pieces, \$45 for 3 pieces. Our judge, Daniel Foster, will select which pieces will be put in the show, as well as give out the awards. The prospectus/ entry form is available at the Redlands Art Association, 215 E. State St., downtown, Redlands and on their website: [www.redlands-art.org](http://www.redlands-art.org). Use the Friends tab, then forms, 2016 MMM Show. Type in your information and then print it out. Art can be for sale or not for sale. The Gallery gets 20% of sales.

All entries must be hand delivered to the RAA Gallery on Sunday, March 6, between 10am - 4pm. Winners of the competition will participate in over \$ 3000 in cash and product awards. Purchase Award Patrons will select their art pieces at a private showing before the exhibit opens for the public.

Grand Opening Gala will be Friday, March 11 from 5pm to 7pm. The Artist's Award Ceremony will be on Sunday, March 13.

**About the jurist:** Daniel Foster has a distinguished 25-year career in arts and community leadership, programming, and cultural visioning/planning — in addition to being a proven nonprofit and philanthropic foundation leader and fundraiser — having raised nearly \$30 million over the past twelve years.



Foster is currently the Founding Director of the North County Arts Network in San Diego. Until June 2015, Foster was the Executive Director of the Oceanside Museum of Art (OMA) that achieved dynamic and tremendous financial, programmatic, and institutional growth for the museum during his three year tenure.

Previous to OMA, Foster was the President/CEO of The Community Foundation Serving Riverside & San Bernardino Counties — a major \$60 million



philanthropic foundation and regional leader for quality of life issues in the Inland Empire. During his tenure, Foster led a major initiative to initiate and establish Arts Connection, the Arts Council for San Bernardino County. From 2003-08, Foster was the Executive Director of the Riverside Art Museum (RAM) and widely regarded as a key visionary community leader in developing the city of Riverside's now successful arts downtown revitalization strategy and formal cultural plan.

Foster has extensive arts community and cultural planning experience. Foster has provided significant leadership and advisement to formal arts/cultural planning efforts in the cities of Riverside, Redlands, Oceanside and the Counties of San Diego, San Bernardino, and Riverside over the past ten years.

Foster has received many honors and awards throughout his arts and nonprofit professional career, such as Nonprofit Executive Director of the Year-2008, County of Riverside; and Finalist Award (\$25,000) for the James Irvine Foundation Leadership Award-2008.

For further information on how to enter or become a Purchase Award Patron, please visit the Redlands Art Association at 215 E. State St., downtown Redlands, visit the website [www.redlands-art.org](http://www.redlands-art.org) or call, 909-792-8435.

— Sandy Davies,  
Publicity





### Call For Entries – Photographers!

Call for entries ... Redlands Art Association will again hold their annual Community Photography Show at the Gallery on State Street, downtown, Redlands. The show will be one week long, from January 18th through the 24th. This is one of the few shows that the public is invited to put their art in the gallery. No show theme... could be a picture of a great collector car - a desert landscape - a parking lot floral close up.

Bring in your photos on Saturday, Jan 16 from 2 to 4:30 pm, framed and ready to hang with wire on the back. Fee is \$5 for one piece, \$8 for two. It may be for sale or not. The Gallery will retain 20% commission from any sales during the show.

There will be a closing reception on Sunday, Jan 24th from 2 to 4 pm, where artists, friends and family are invited to enjoy some good photography and yummy refreshments. At the end of the reception, the artists will take their work home. Questions? Email Judith Sparhawk at [jsparhawk746@yahoo.com](mailto:jsparhawk746@yahoo.com).

— Sandy Davies, Publicity



### Volunteer Hours.

We have resumed our 11 am to 4:30 pm opening hours in the gallery. Once again we will be dependent on our volunteers to sit in the gallery for Children's Classes either on Monday Mornings between 10 -11 am or at the end of the day from 4 pm to 6:30 pm (depending on the class). We appreciate you covering these times.

— Liz Coviello, RAA President

### Market Night Pilot Scheme

A huge thank you to all the artists who participated in the Market Night Pilot Opening Scheme. It was because we had small additional displays of art on the patio which attracted people to stop, look, chat come in, explore the gallery and peep in on the Watercolour Class. With a trained volunteer working the POS (Point of Sale...or computer!) we were able to open our doors between 5:30 – 8:30 pm on Thursday Nights. We had 289 visitors over 11 weeks including 55 new visitors which was amazing. The best part was return visits from new visitors to make purchases. We made small sales, sold classes, enabled new Friends of RAA to join or others to renew.

Consequently, we are going to keep opening on Market Night, except on wet nights, but we can't do this without a trained volunteer and artists to display their art. Therefore we need regular volunteers who would be prepared to work Market Night. There will be a sign up sheet at Take-In for those interested in making this a regular event.

I would also like to thank Linda Willason for volunteering and opening the gallery every Sunday morning through November and December before Christmas. We welcomed 90 visitors, including new people, into the gallery and made sales.

— Liz Coviello, RAA President

### Opening Receptions

We are going to continue with the Opening Receptions once every five weeks but sometimes we might combine them with Featured Artist Shows or a Show within a Show. That way we are supporting each other. Please bring friends and family with you, your work is fantastic and everyone needs to see it and perhaps purchase a piece they can't live without. We will be opening these receptions to the public but spread the word.

—Liz Coviello, RAA President



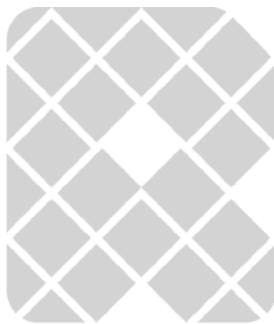
## Featured Artists

If you were unable to attend Kelley Haven's opening reception for her Featured Artist Show – I'm sorry you missed a treat with live music, delicious food and a great show. Her show is up until 22nd January. Remember Jillian O'Dwyer was collecting foot prints on clay at Parliament Chocolate at the last Redlands Art Walk? She is the next Featured Artist on January 23rd and we'll finally get to see the outcome. Our last Featured Artist before the MMMS is Janis Commentz, who inspires us all with desert landscapes, and her series of raven paintings.

The Featured Artist will not hang in the MMMS but Joanne Ohmenous will be the Featured Artist for the "Potpourri/Floral" theme show. Take-In for this show is Friday 1st April and the Gallery will be part of the Garden Tour. We will be inviting local florists to make a floral donation to the gallery for the Garden Tour Weekend but artists are also welcome to add a floral decoration.

If you would like to be considered for Featured Artist this year please contact the Featured Artist Committee.

— Liz Coviello, RAA President



Creativity starts **here.**



## Upcoming Program and Workshop: "Oil Painting the Lively Still Life" with Karen Werner

**Program: Tuesday, February 23 at 7:00 PM**

An accomplished, award-winning artist, Karen Werner, has been painting full time since leaving the teaching profession in 2005. She is a versatile painter, working in both oils and watercolor, painting a wide variety of subject matter: still life, landscapes, urban scenes, portraits and figures. She paints realistically, but in a loose poetic style.

During her program she will discuss her life's journey as an artist, including her philosophy and techniques, as she works on a demonstration painting. Don't miss the opportunity to see and hear this much sought after artist.

Program is FREE to all.

**Workshop: Saturday, February 27 from 9 AM – 4 PM**

Learn how to paint or improve existing skills, by painting still life from life. Karen will demonstrate the benefits of painting small and often. She will share four basic concepts that you'll be able to apply to painting any subject. Still life doesn't have to be stuffy! Come and see how design, color and loose brushwork can bring energy and vitality to your painting.

Workshop Fee: \$130. / RAA Friends: \$100. A supply list will be available at sign up.

— Lori Powell, Education

## Featured Artist Jillian O'Dwyer

**Reception: Friday, February 12, 5 – 7 pm**

Jillian O'Dwyer will be hanging an installation of ceramic plates, "Tapestry," for her featured artist show at the Redlands Art Association January 23rd through February 13th.

During this past October's Downtown Redlands Art Walk, Jillian collected over 50 shoe, foot and (one) hand prints from art walk goers onto a square slab of clay. Uncontrolled by the artist, slabs of clay were distorted, completely or partially covered with prints, barely dented, ripped apart and more by the participants. After collection, Jillian determined how to best influence the final result by adding patterns, trimming parts of some squares and selecting glaze combinations. The end collaboration is, at times, unrecognizable as a shoe print.

"Tapestry" speaks to many things from popular shoe styles in Redlands to the individuals who participated. The quality and substance of the pattern on each plate shows the confidence in their step, their mood for the day and maybe even their affinity for getting dirty.



These insights are reflected in each plate's title as well as short stories that accompany many of the plates.

A closing reception for the exhibit will be held on Friday, February 12th from 5 to 7 pm at the Redlands Art Association. Jillian will have clay available for those who wish to try their hand at creating their own texture patterns. Free and open to all ages!

Thank you to the Downtown Redlands Art Walk and Parliament Chocolate for hosting Jillian in October and to all of those who donated prints. This project would not have been possible without your support!

Jillian O'Dwyer is a ceramic artist who focuses mainly on highly textured, hand built, functional pieces. When she is not creating her own work she teaches hand building classes to both children and adults. Jillian is currently an instructor at AMOCA Ceramics Studio and the Redlands Art Association. Her work is exhibited at The Studio Artists' Gallery at AMOCA, Redlands Art Association, Riverside Art Museum's Blue Door Museum Store, Artisans Etc. and she shows at various art fairs.



## Kelley Havens Featured Artist



**Show dates: January 4-23**

Kelley Havens is the featured artist this month. She is self-taught, pushing outside the box of traditional methods. She will often incorporate found objects into her work, gathered on hikes and nature trips. Her fondness for nature and its varied patterns and secret geometric designs have always been an intrigue. This influences and inspires her organic style.

She also offers Interior design consulting, hand-painted decorative walls, textured and faux stone finishes, as well as specialized custom art pieces to complete a look.

Her work can currently be viewed at:

- ♦ Specialized Marketing Services in Irvine
- ♦ Aveda Hair Salon in Huntington Beach.
- ♦ Youtube: "ArtistUnusual: Kelley Havens"
- ♦ Desert Art Center gallery in Palm Springs
- ♦ KelleyHavens.com







## Janis Commentz Featured Artist

**February 13th – March 4th**

Janis Commentz is a southern California native who grew up near the coast and began to draw and paint early in life. As an artist's daughter, she was surrounded by art materials and enjoyed trips to galleries and museums, as well as seasonal trips to Laguna Beach and Carmel.

Influenced early on by the Impressionists, today Janis is especially drawn to contemporary figurative painters such as Richard Diebenkorn, Lucian Freud and California's Linda Christensen.

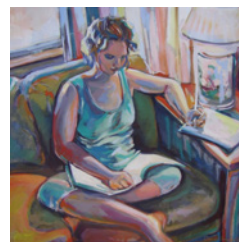
At the University of Redlands, Janis earned a B.A. in art and English and studied with John Nava, well-known for his tapestries at the Cathedral of Our Lady of the Angels in Los Angeles. In 1977, she moved to the Mojave Desert to teach high school art and English. She holds an M.A. in Education from California State University at San Bernardino.

Retired from public school teaching in 2012, Janis pursues art full-time. Janis facilitates weekly life drawing sessions in Joshua Tree and teaches youth



classes several times a year. She exhibits at Gallery 62 in Joshua Tree, the Purple Agave in Morongo Valley, Rainbow Stew in Yucca Valley, T.E. Studios in Riverside, and the Twentynine Palms Art Gallery in Twentynine Palms. She was a co-exhibitor/creator of "6 Chicks: A Pop Up Art Gallery" in December 2013; this space is now Gallery 62 in Joshua Tree, CA.

Janis participated in the Hwy 62 Open Studio Art Tours for six years. Recent festivals include Joshua Tree National Park Juried Art Exposition, Joshua Tree Spring Art Festival, California State University at San Bernardino Spring Art Festival, and Art, for Heaven's Sake. In 2014, Janis was featured in a two artist show at the Glass Outhouse Art Gallery in Twentynine Palms and a solo show at the Twentynine Palms Art Gallery. In February 2015, Janis' painting, "Silver Linings" was the featured publicity art for the Twentynine Palms Visitors Center and Gallery. In December 2015, Janis exhibited with six women colleagues as one of the "6 Chicks" at the Twentynine Palms Art Gallery.



## Operating Committee

Many of you say you'd like to be more involved with RAA and one way of doing this is to stand as an officer on the Operating Committee. I know it sounds daunting, says the not quite so new president, but we need people to help with the running of the gallery behind the scenes. If you are interested in this kind of position please contact Gail Brownfield or the Gallery and we will forward your names to Gail. We are hoping to give people the chance to work alongside the person currently holding the position so you know what you have to do. Each officer stands for two years and works with a small committee.

*Liz Coviello, RAA President*

## Its Spring Clean time for Artists and frames for sale

**Saturday 30th January 11 am-1 pm.**

We had a small Artists Swap back in October which was quite successful and people asked if we would do this again. So here we are... it's time to sort out the cupboards! In addition, we have some frames (they need glazing, mats, and backs) from Marshall Taylor to sell in the gallery, from small to huge, and a few framed pieces. Some of the frames are new and still in plastic wrap.

## New Officers for the New Classes

Just a reminder we have new classes starting all this month. Children's classes start on Monday 25th January. Ed Sotello's Watercolour group is already up and running, Chick Curtis's Open Studio for Oil Painting starts Sunday 31st January from 10am - 1pm; Martha Cowan's Wednesday Oil Painting group starts again on Wednesday 27th January from 10am - 1pm. Adeola is offering an Enameling Class in February.

Please check the website under "Education" for Youth and Adult Classes or "Redlands Art Association" on Facebook for updates for classes and news in the gallery or pop into the gallery and pick up a flier.

*— Liz Coviello, RAA President*



## Annual Tea Party

**Sunday, January 31st, from 3-5pm**

Yay, it is time for the Friends of RAA Annual Tea Party. Please bring finger food, which can easily be divided between three tables. If you would like some transport please contact the gallery and we will endeavor to arrange for people to be picked up and collected. It's been such a fun event and it's lovely to see everyone — see you all there.

*— Liz Coviello, RAA President*



redlands  
ART ASSOCIATION

# Don't Forget to Renew Your Friendship with RAA!

To renew, go to: <http://redlands-art.org/friends/friends-of-raa-form/>

Or use this form below!



redlands  
ART ASSOCIATION

## FRIENDS OF RAA CATEGORIES:

Life ..... \$1,000  
 Sponsor ..... \$100      Individual ..... \$50  
 Family ..... \$50 *first family member + \$10/additional member (within same household)*  
 Student ..... \$10 *Students must show valid school id.*

**CIRCLE ONE**

## DONOR CATEGORIES:

Benefactor ..... \$2,500  
 Contributor ..... \$1,000–\$2,499  
 Sustaining ..... \$500–\$999

## FRIENDS OF RAA AND/OR DONATION FORM

Please fill in your information below and mail this form along with your payment to:

**Redlands Art Association, 215 East State Street, Redlands, CA 92373**

Questions? Call the Gallery at 909-792-8435

Name(s) \_\_\_\_\_ Date \_\_\_\_\_

Address \_\_\_\_\_

City \_\_\_\_\_ State \_\_\_\_\_ Zip \_\_\_\_\_

Phone (\_\_\_\_\_) \_\_\_\_\_ E-mail \_\_\_\_\_

Submitting your email address gives us permission to send RAA information via email, as the need arises.

Your website \_\_\_\_\_

For Friends of RAA: I am signing up as: ☐ **Renewing** Friend of RAA OR ☐ **New Artist** Friend of RAA OR ☐ Art Appreciator & Supporter

Artists: list the media you work in: \_\_\_\_\_

(Example: oil, watercolor, jewelry, ceramics, etc. List all you do.)

**New Friends of RAA:** The Association is entirely volunteer run. We rely on our Friends to be our Gallery Docents: greeters and salespeople. You will be asked to be a Gallery Docent (no experience necessary) to assist the Gallery Coordinators. The gallery is our showcase for sales and art classes. We are all promoting each other, art education and the visual arts in general, to the people of Redlands.

☐ I am interested in volunteering: ☐ Committee Work ☐ Teaching ☐ Fund-raising ☐ Gallery Docent ☐ As needed

Please apply to: ☐ Friends ☐ Art Center ☐ Donation ☐ Margaret Clark Art Education Enrichment Fund (MCAEEF)  
 \$\_\_\_\_\_ + \$\_\_\_\_\_ + \$\_\_\_\_\_ + \$\_\_\_\_\_ = **TOTAL \$**\_\_\_\_\_

Paid by: ☐ Cash ☐ Check # \_\_\_\_\_, ☐ Debit or Charge: ☐ Visa ☐ MasterCard ☐ Discovery  
 Card Expiration Date \_\_\_\_\_ Card Account Number \_\_\_\_\_ Signature \_\_\_\_\_

Order No. \_\_\_\_\_ ☐ Renewal ☐ New Please staple the receipt to this form and put in End-of-Day envelope.