



redlands
ART ASSOCIATION

Creativity starts **here.**

Art Center & Sales Gallery

215 East State Street

Redlands, CA 92373

909-792-8435

www.redlands-art.org

Member submissions are welcome and
due the First Thursday of the Month.

Please email submissions to:
newsletter@RedlandsArtAssociation.org
or use the form on our website at:
[http://redlands-art.org/newsletter/
newsletter-submissions/](http://redlands-art.org/newsletter/newsletter-submissions/)

NOVEMBER 2016

2016 Take-In Dates & Themes

Current Show (6 weeks) The Way We Were

December 2 (6 weeks) Holiday Celebration

*Themes are suggestions only.
All take-in dates are on a Friday, 9am-7pm*



NOVEMBER LEADERSHIP REPORT:

◆ **YOUR PRESIDENT: LIZ COVIELLO**

I hope everyone has dried out from Art on State Street, who would have thought we'd get so much rain and thunder in October? Didn't it just rain? Famous last words from my son helping to erect the EZ up "It's only 10% chance of rain Mum, you don't need the sides!"

Many thanks to all the artists who stuck it out and to everyone who came out to explore and purchase art despite the rain. I hope everyone has just about dried off and EZ ups are now washed and put away for next year.

This is the busiest time of the year in the gallery and for all our artists. There are lots of studio tours and shows at this time of the year and we wish the best to all our participating artists.

Wishing everyone a Happy Thanksgiving.



IN THE GALLERY THIS MONTH



Afternoon & Evening Volunteers Needed for Take-In

Time slots needed:

- ◆ **Afternoon 12:30 to 4pm or**
- ◆ **Evening 4 to 7:15pm**
(including tidying up afterwards)

Job Description

- You need to help people when they come to complete the correct paperwork
- Guide new people through the Take-in Process
- Ensure their art adheres to the size, hanging instructions etc. in the gallery agreement
- Make sure the completed gallery agreement is signed.
- Ensure the take-in form is accurate and completely filled out and legible for the typist.

Call the gallery (909) 792 8435 if you are interested.

— Thanks, Pat Meeker

Christmas Tree Take-In

**Friday 18th November between
11:30am and 4pm**

The tree will be bare, ready to be adorned with gifts and Christmas decorations. The fee is \$5 for 10 items.

This year we will have a table in the East Gallery for the gift section, such as scarves, larger decorations, and Christmas cards. We sold over 100 items from the tree last year. As decorations and gifts are sold, artists will receive a phone call inviting them to replace the item. Don't forget each item needs a small tag with your name and the price (you may want to use a sticker for the price or pencil). We don't have these in the gallery!

There will be special colored Take-In Sheets in the gallery for artists to use.

MORE IN THE GALLERY THIS MONTH



Gallery Holiday Hours:

- From Black Friday, November 25th until Christmas Eve the gallery will be open from 11am to 5:30pm Monday through Saturday.
- Market Nights we will be open until 8pm (unless it is wet when Market Night is cancelled).
- The 4 Sundays before Christmas we will be open from 11 to 2pm.

Free Holiday Wrapping

This was successful last year so we are offering it again this year.

Wish List Holiday Register

We are offering our customers the opportunity to register a list of gifts they would like in the gallery (on the understanding we are not saving pieces just for them) so friends, partners and spouses can stop by and find that special something gift.

Market Night

Take Advantage of Market Night — come down and have a card table with small items to sell. We can fit 4 to 5 small tables on the patio. The city will not let us an EZ-Up on the street outside the gallery. Our section of State Street is designated for Agriculture hence all the farmer's stalls. Despite this we've been "discovered" by lots of people who never thought we were open, who regularly stop by to see what the gallery has to offer. At this time of year, ring the gallery to ensure your space.

Holiday Celebration – December 2nd Take-In

Please, please, please try and get to the gallery by 6pm for Take-In. Leave yourself an hour to complete the paperwork and pay. The Take-In form is on line for your to complete, save and print off a copy to bring in with you:

<http://redlands-art.org/wp-content/uploads/2010/07/Inventory-Take-In-Form-2015.pdf> .

Judith and the Take-In Crew often don't leave the gallery until after 8 pm at this Take-In and it makes it a long day. Officially, the gallery closes at 7pm. If you really can't make it on this Friday, please contact one of the coordinators to make alternative arrangements.

Featured Artists

We have just three Featured Artists until the end of the year...

- Mary Grinyer - 10/29 -11/19/16
- Aida Schneider - 11/19 – 12/9/16
- Sheila Hansberger 12/9 – 12/31/16
- Martha Cowan is our first Featured Artist of 2017

Each Artist will be holding an Opening Reception please stop by and support their show.

Last Opening Reception of the Year – Sunday 12th December

We are combining the Holiday Celebration Reception with Sheila Hansberger's Opening Reception. Stop by, bring a few tasty nibbles to share, and see the two shows. Plus, there will be irresistible last minute gifts.

Do You No Longer Drive?

If you no longer drive, and you would like to come to an Opening Reception, contact the gallery and we'll can arrange a ride for you.

Collection for Family Services.

Once again we will be collecting food and art materials for Family Services.

Please bring your donations into the gallery by 2nd December and we will ensure Family Services receive it in time.



MORE IN THE GALLERY THIS MONTH

Join the RAA Ceramics Guild! NEW

A Ceramics Guild is forming within RAA. All RAA members who are regional ceramic artists or potters in good standing are invited to participate.

"We want to create a creative and supportive community for our clay-focused members," says Lisa Tucker, of TuckerWorks Art Studio in Redlands.

Ultimately, Ceramics Guild activities will be co-created by its participants. *"We can have field trips, critiques,*

technical and resource support, special events and shows, and studio tours. Really, it can be whatever want."

The Guild's first unofficial event, a Redlands-based, open-studio tour, will be held on December 3rd, from 10 AM to 3 PM. Pick up maps at either the RAA Gallery or at TuckerWorks Art Studio, 333 E. Stuart Ave #F in Downtown Redlands.

To join the Ceramics Guild, please contact Lisa Tucker at Lisa@tuckerworkstudio.com.

November Program: My Journey from Traditional to Art Quilter by Candy Glendening

Tuesday, November 29 at 7 pm

Redlands textile artist Candy Glendening is addicted to color! She dyes fabric so she can have just the hue & texture she wants, and then uses it to make art quilts and "everyday art"; bags to carry, silk scarves to wear are all opportunities to create an item that brings joy to the senses of sight and touch.

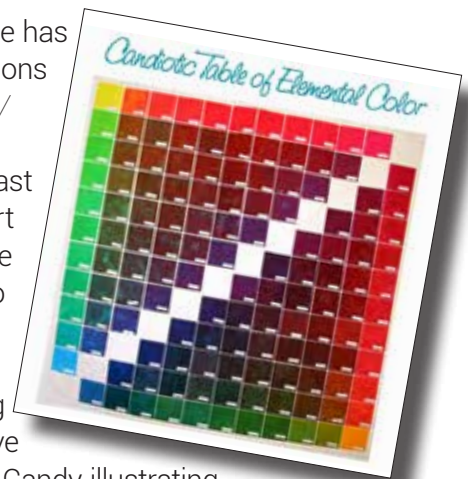


She has been using Procion MX fiber reactive dyes for close to 20 years now, using just a few primary colors plus black to create a myriad of different hues. Because she can dye any color she wants the options can be overwhelming; so most of her work is done in a series that starts with curating, creating and dyeing a color palette of single and multicolor fabrics and working with it for several months in order to really absorb and enjoy how those particular hues relate to one another.



In this program, Candy will discuss how her obsession with color and dyeing fabric led her from making traditional quilts with store bought fabric to becoming the fabric artist she is today. Her story should resonate with artists of any media and help inform beginning artists who are searching for their "muse".

An avid blogger, she has had many publications in *Interweave Press/ F & W Media* quilt magazines (29 at last count); twice her art was featured on the cover. She has also filmed 8 different episodes of the PBS show "Quilting Arts TV". Interweave has also produced Candy illustrating her artistic process in two workshop DVDs: "Dyeing to Stitch: A Comprehensive Guide to Creating Colorful Fabric Art" and "Free Motion Machine Sketching:



Drawing with Thread from Birds to Botanicals".

By day, she teaches Biology at the University of Redlands in Southern California. By night, weekend, and online she

also teaches quilting and dyeing. She shows and sells her work at local art fairs as well as the Redlands Art Association. She joined the Redlands Art Association in 2008, and has been its newsletter and website designer since 2009. To view more of her work, or gain insight

November Program: My Journey from Traditional to Art Quilter by Candy Glendening

CONTINUED FROM PAGE 3

into her process and inspiration, please visit her at her home on the internet: CandiedFabrics.com

The program is free and open to the public; the gallery is located at 215 E. State St. in Redlands, CA 92373

— Candy Glendening

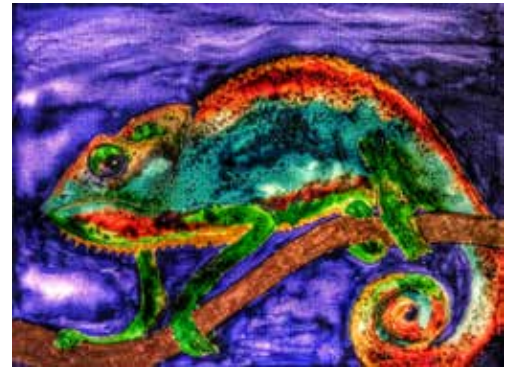
Candy Glendening Open Studio

I will be having an open studio on Saturday & Sunday, December 10 & 11, from 11 am – 4 pm each day. My studio is located at 1309 W. Olive Ave in Redlands, just off the corner of Olive and Lakeside. Please stop by for some holiday goodies, I love getting a chance to say thanks to my textile artist lovers with some mulled cider and yummy baked goods. You'll get a chance to poke around both my dyeing and sewing studios, and I'll have lots of items out for your holiday shopping pleasure! If the weather is nice I'll have an indigo vat going and you can try out the magic of indigo dyeing!



Aubrey Sanchez Exhibit at Stone Wheel Olive Oil

Local Artist and friend of RAA, Aubrey Sanchez, will be exhibiting at Stone Wheel Olive Oil, 7 North Fifth St. in downtown Redlands.




A wide array of subject matter, styles and mediums make up this collection of work. Available for purchase will be originals, prints, jewelry, cards and gift sets. This show runs December 1st through January 28th. You are invited to attend her reception, which

will be held on Saturday, December 3rd, 2-5pm, light refreshments will be served. A portion of all sales will directly benefit The American Heart Association. For more information, please visit www.artbyaubreysanchez.com Or www.stonewheeloliveoil.com

"Life is a kaleidoscope of color... intricate, unexpected, beautiful."

— Aubrey Sanchez

KALEIDOSCOPE



Artwork by
Aubrey Sanchez


Stone Wheel Olive Oil Co
7 North 5th St
downtown Redlands

Dec 1 thru Jan 28

originals • prints • jewelry • gift sets

RECEPTION
Sat. Dec 3, 2-5pm

A portion of all sales
will directly benefit



American Heart Association

Free Redlands Studio Holiday Tour

Bring a friend to explore local art studios and buy original art, jewelry and pottery during the **Redlands Holiday Open Art Studio Tour** on Saturday, December 3rd, 10am to 3pm. The free, self-guided tour starts with map pick-up at TuckerWorks Art Studio, 333 E. Stuart Avenue, #F in downtown Redlands (just north of Redlands Blvd., between 6th and Church). Refreshments will be available at many studios.

More than 15 artists from TuckerWorks Art Studio and The Redlands Art Association are participating at five different sites within the Redlands city limits. It's a great opportunity to see the creative ways in which artists do their work. Visit **facebook** or the **webpage** for more information.

Participating artists include:

Beth Bobbitt, Silversmith/Jewelry Designer
Jack "Cactus" Caselles, Ceramics
Katie Cullen, Stoneware
Cambria Diersen, Hand-built Ceramics
John Fisher, Raku & Saggar Fire
Annie Koning, Earthenware Pottery
Kim Munkres, Stoneware/Obvara
Scott Pangburn, Coiled Stoneware
Frank Perez, Photography
Anna Robles, Ceramics
Nick Robles, Photography, Drawing, Textiles, & Enamelware
Tim Rogers, Glass & Graphite
Brenda Spoelstra, Stoneware
Dean Stayner, Stoneware
Jim Stewart, Glass & Stoneware
Lisa Tucker, Ceramic Sculpture & Handmade Soap
Christine White, Acrylic, Oils, & Watercolor



Artist Helping Artist Tip...

If you are in a Fall art show and you sell your art on Etsy, make sure you create an event on Etsy Local, or look and see if another Etsy seller has listed the event and you can add your name.

If you have a Facebook page, make an "Event" and share it with your friends.

A Mission to Carry Us Forward

As previously reported, we've been undergoing an ambitious revitalization process. Part of that process was to examine our mission — *the reason why the Redlands Art Association serves such a vital role in our region* — and the organizational values that frame that mission.

After reviewing membership surveys, working through a day-long re-envisioning exercise, and obtaining feedback from volunteers at the committee level, the Board of Directors has developed and approved a set of values and a refined mission.

"The mission of The Redlands Art Association is to enrich lives and promote a vibrant society by inspiring creativity, nurturing individual expression, and supporting the visual arts."

Over the next few years, you will see our strategic initiatives aligned behind this mission through the framework of our values.

This is an exciting time to be part of the Redlands Art Association and we look forward to working alongside you to support the visual arts in our region.

If you have questions or feedback, please contact us at president@Redlandsartassociation.org.



redlands
ART ASSOCIATION

Our Core Values

Inclusiveness: We respect and appreciate all visual artists and supporters. We make space for all members — new and long time — and honor their contributions.

Volunteerism: We encourage active participation for the common good and wellbeing of our community. As a volunteer-driven organization, your action makes our existence possible.

Artistic Growth: We believe in fostering and expanding the skills of creative expression so that artists may grow.

Education: We actively support and develop ongoing visual arts education programs for learners of all ages.

Connectivity: We serve as a vital hub in order to strengthen and promote the visual arts in our region.

Integrity: We conduct ourselves and the business of the organization with high ethical standards and responsible financial stewardship.

Innovation: We welcome and value new ideas, methods, and best practices not only in our respective disciplines but in the evolution of the association itself.

Fun: We bring joy to our interactions, gatherings, events, activities, and the business of our organization.

**All Featured Artist Shows and receptions are held at the gallery, located at 215 East State Street, Redlands.
Open Monday through Saturday, 11 AM to 4:30 PM.**

Featured Artists: Mary Grinyer

Oct. 25 to Nov. 19

Mary, a long time member of the Redlands Art Association, is excited to be the Featured Artist from October 29 through November 19. The theme of the show is "The Heart and More..." Her new three dimensional ceramic hearts will be shown for the first time. The heart has been a theme of Mary Grinyer's art for many years. She began doing heart-related art when her Father had a successful open heart surgery. The heart can represent many things: the physical heart which keeps us alive, the emotional seat of a person's thoughts and emotion, or the central or innermost part, the essence of something. This show will explore heart related themes as well as presenting several sculptures and ceramic pieces. Ceramic heart pieces include "Mending Heart," "Ruptured," "Gift Wrapped," and works that present the heart as a decorative item.



An interest in ceramics began for Mary at the Goeske Senior Center in Riverside after she retired. She enjoyed working there and within a few months started taking beginning ceramics at Riverside City College with John Hopkins. Since then she has attended a series of classes in ceramics and sculpture with Stephen Horn at the college. Stephen Horn inspires students to experiment and often asks us to try it and see what happens. They experiment with forms, oxides, slips, glazes, printing on clay and multiple firing methods.

Mary Grinyer is a member of the Redlands Art Assn., Riverside Art Museum, Riverside Community Art Assn. and a resident of Riverside, CA. She is a graduate of Ramona High School and has an AA in Art from Lake Tahoe Community College. She has continued to work at the Goeske Senior Center ceramic group and now volunteers to teach hand building ceramics to interested seniors. The Clay Yard in Ontario, CA is her newest venture. She had studio space there for several years at Ceramic Services until it closed at the end of May. Eleven studio members, including Mary, purchased the business. They feature studio memberships, classes, firing services (including Raku), clay pugging, and they sell clay. She still maintains a studio space there.

Featured Artist: Aida Marini Schneider

**Nov. 19 to Dec. 19 •
Opening Reception: Sun.,
Nov. 20 from 2 to 4 p.m.**

"I'm looking forward to exhibiting at the RAA gallery as the featured artist for November 19 through December 9. The paintings from this series "Innerscapes" represent my personal interpretation of the surrounding desert and mountains in mixed media on cradled hardboard panels.



I'm a longtime Redlands resident and member/volunteer of RAA. Until recently my husband and I traveled nationally, exhibiting and selling at top juried art festivals such as Old Town Chicago, St. Louis Art Festival and Sausalito Arts Festival. I served on the jury of selection at the Cherry Creek Art Festival and my painting "Tapestry 52" was chosen for the Festival's annual fundraising poster that year. Last May I was pleased to act as co-juror for the Redlands Festival of Arts.

The Desert Art Collection gallery in Palm Desert represents my work and will feature my paintings in March 2017 during Artwalk.

Join me at the opening reception 2 to 4pm, Sunday, November 20 at the RAA gallery, 215 E State Street.

— Aida Marini Schneider, www.aidamarinischneider.com



Featured Artist: Martha Cowan

December 31, 2016 to January 20, 2017

Martha Cowan's love of art began at about age 6, when her father spent time teaching her how to draw. She knew at this young age that she wanted to be an artist. After pursuing art through her school age years, she realized as a young adult that while she loved to paint, she wanted to have a career as a graphic designer.

Simultaneously, Martha pursued graphic design studies in college and oil painting with Cathy Shefer, a representational painter in Alta Loma. She graduated from Chaffey College, studied at Art Center College of Design for four years, and graduated with honors with a Bachelor of Fine Arts degree from California State University, Fullerton.



Martha's early career was in graphic design, but her primary interest has always been in painting with oils, and that is what she devotes her time to now.

She has shown her paintings in many local

shows, including the Artists Council Exhibit at the Palm Springs Art Museum in 2016, as well as the Museum of American Illustration, New York, in 1989. Her paintings belong to many private collections. She has studied with Elin Pendleton, Carol Marine, Jennifer McChristian, David Leffel, and Joseph Todorovitch, from whom she has been learning for since 2010.

Martha has taught art at Orange County High School of the Arts, Chaffey Community College, San Bernardino Valley College, and Dona Merced Elementary School. She is currently the art teacher for a private elementary school, and she teaches adult painting classes for the Redlands Art Association.

She is pursuing painting seriously, and is showing and selling her art whenever possible. She is an Associate member of the California Art Club.

My interest in portraits began about 10 years ago, when I joined a monthly portrait painting group at the Chaffey Community Art Association.

Gayle Stratford was the facilitator of this group. We met every month to paint from the live model. The group continues with another facilitator, and now it's held at the Chaffey Community Art Museum in Ontario. I admire Gayle's work, and when I learned that she



was a student of David Leffel's, I had the good fortune of attending one of his portrait workshops in 2013. Even though I admire both of these great artists, Joseph Todorovitch is who I have been learning from fairly continuously since 2010.

He has helped me evolve and improve so much over the last six years. It is to him I owe so much credit.

Artist Statement:

My portraits, like my other subjects, are meant to capture the essence of the person, while not showing every detail. I strive to paint from the heart and to portray the person the way I want the viewer to know them.



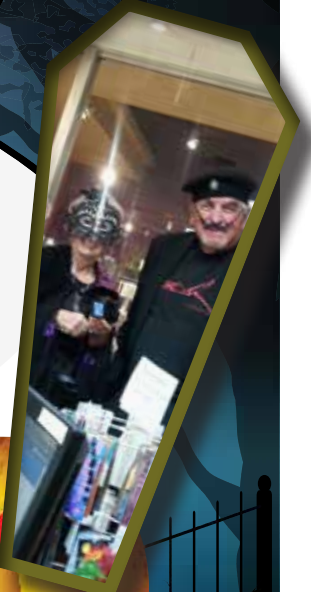
I work in oil on linen, smooth panel, or cotton canvas. I use a limited palette, as taught to me by Joseph, through the great Anders Zorn.



Creativity starts here.

A **FUN TIME** WAS HAD AT THE RAA **OPENING RECEPTION, HALLOWEEN GATHERING:** **"THE WAY WE WERE"**

Last month's RAA Opening Reception fell on the Friday of Halloween weekend, and the response was wonderful! Many RAA Friends came dressed as their favorite Dead Artist, and fun and merriment ensued! Mr. Salvador Dali, Ms. Frida Kahlo, Mr. Andy Warhol, Mistress of the Spiders, the Spirit of Unrecognized Women Artists, Picasso's model, an Egyptian princess and many more all came to enjoy the party and the delicious party food. **Many thanks to all who participated!!!**



Tis the Season for Membership Renewal!

For many of us, membership in the Redlands Art Association will expire at the end of 2016.

This year, there's been a big—and very welcome—change in membership terms. Your membership is now valid for 365 days beginning the date you renew. And we will send out renewal reminder emails.

There are four methods by which you can renew:

- Fill out the secure form on the RAA website and pay by PayPal here: <http://redlands-art.org/friends/friends-of-raa-form>
- Fill out the below form and mail it with your check to the Redlands Art Association, 215 East State Street, Redlands CA 92373.
- Renew by calling the RAA Gallery at 909-792-8435
- Visit the RAA Gallery at 215 East State Street, in Redlands

Renew Now for Great Benefits

- New shows, events, and opportunities for artists
- Negotiated discounts with local art and craft supply stores
- Opportunities to create and join affinity groups with other like-minded artists
- A renewed mission and ethos of inclusion, innovation and connection
- A place for community, networking and collaboration
- Discounts on classes and workshops for artists of all ages & skill levels
- Gallery privileges with new shows every six weeks
- Enthusiastic new artist members
- Monthly Newsletter



redlands
ART ASSOCIATION

FRIENDS OF RAA CATEGORIES:

Life \$1,000
 Sponsor \$100 Individual \$50
 Family \$50 *first family member + \$10/additional member (within same household)*
 Student \$10 *Students must show valid school id.*

CIRCLE ONE

DONOR CATEGORIES:

Benefactor \$2,500
 Contributor \$1,000–\$2,499
 Sustaining \$500–\$999

FRIENDS OF RAA AND/OR DONATION FORM

Please fill in your information below and mail this form along with your payment to:

Redlands Art Association, 215 East State Street, Redlands, CA 92373

Questions? Call the Gallery at 909-792-8435

Name(s) _____ Date _____

Address _____

City _____ State _____ Zip _____

Phone (_____) _____ E-mail _____

Submitting your email address gives us permission to send RAA information via email, as the need arises.

Your website _____

For Friends of RAA: I am signing up as: ☐ **Renewing** Friend of RAA OR ☐ **New Artist** Friend of RAA OR ☐ Art Appreciator & Supporter

Artists: list the media you work in: _____

(Example: oil, watercolor, jewelry, ceramics, etc. List all you do.)

New Friends of RAA: The Association is entirely volunteer run. We rely on our Friends to be our Gallery Docents: greeters and salespeople. You will be asked to be a Gallery Docent (no experience necessary) to assist the Gallery Coordinators. The gallery is our showcase for sales and art classes. We are all promoting each other, art education and the visual arts in general, to the people of Redlands.

☐ I am interested in volunteering: ☐ Committee Work ☐ Teaching ☐ Fund-raising ☐ Gallery Docent ☐ As needed

Please apply to: ☐ Friends ☐ Art Center ☐ Donation ☐ Margaret Clark Art Education Enrichment Fund (MCAEEF)
 \$ _____ + \$ _____ + \$ _____ + \$ _____ = **TOTAL \$** _____

Paid by: ☐ Cash ☐ Check # _____, ☐ Debit or Charge: ☐ Visa ☐ MasterCard ☐ Discovery
 Card Expiration Date _____ Card Account Number _____ Signature _____

Order No. _____ ☐ Renewal ☐ New Please staple the receipt to this form and put in End-of-Day envelope.