



redlands
ART ASSOCIATION

Creativity starts **here.**

Art Center & Sales Gallery

215 East State Street

Redlands, CA 92373

909-792-8435

www.redlands-art.org

Member submissions are welcome and
due the First Thursday of the Month.

Please email submissions to:
newsletter@RedlandsArtAssociation.org
or use the form on our website at:
[http://redlands-art.org/newsletter/
newsletter-submissions/](http://redlands-art.org/newsletter/newsletter-submissions/)

OCTOBER 2016

2016 Take-In Dates & Themes

October 21 (6 weeks) The Way We Were

December 2 (6 weeks) Holiday Celebration

*Themes are suggestions only.
All take-in dates are on a Friday, 9am-7pm*



NEWS FROM OUR FEARLESS LEADERS:

◆ **YOUR PRESIDENT: LIZ COVIELLO**



October Leadership Report

With so much happening within the RAA it's good to get outside, take a walk and enjoy the Fall colours. Yes, Fall is finally in the air, the mornings are darker, the evenings are drawing in, while the temperature is dropping and Art for Heaven's Sake is just around the corner! Many RAA artists are participating in Art for Heaven's Sake and the other art shows in town this holiday season so please stop by and support them if you can, even if it's only to say "Hi".

I would like to welcome any new Friends of RAA who have signed up in the last few months, either to take classes or to show their work in the gallery, thank you for joining RAA.

As we all know this is the busiest time of the year for artists and the gallery and I hate to remind you the Multi Media Mini Show is only a few months away, so happy creating everyone.

— Liz Coviello, RAA president



Art on State Street

RAA's Art-on-State Street is teaming up again with Redlands' Downtown ArtWalk on October 23, 2016.

50 RAA artists will line State Street between 5th & 6th (near Ed Hale's Park) for one day only, Sunday Oct. 23 from Noon to 6 pm, offering a wonderful variety of art to the wandering visitor. Serious art – whimsical art – functional art. RAA is lucky to have such talented artists. Other attractions are the food trucks, food/beer garden, the music, and the other artists and booths around in downtown businesses. The Gallery at 215 E. State Street will also be open.

Interested artists can contact the Gallery for more information.

— Sandy Davies, Publicity



RAA OPENING RECEPTION, HALLOWEEN GATHERING: "THE WAY WE WERE"

FRIDAY OCTOBER 28TH, 7-9 PM

This month's RAA Opening Reception falls on the Friday of Halloween weekend, and the title for this event is most fitting! Yes foolish mortals, we will enjoy the gorgeous show pieces in the gallery, spooky snacks, beverages, and good conversation! But in the true spirit of Halloween we also encourage you to join in a festive interpretation and come dressed-up as your favorite deceased artist from the past (other costumes are welcome too). Ooooh, who knows who you might see! We look forward to seeing you Mr. Salvador Dali, Ms. Frida Kahlo, Mr. Andy Warhol — is that you? Dirt, dust, and decay is optional but a dreadfully delightful night at the RAA is a sure thing!

Many thanks! Truly — Christine White, RAA Board Member



Gallery News

There are just 2 shows left in the gallery before the end of the year

- ◆ October 21st - "The Way We Were"
- ◆ December 2nd - "Holiday Celebration"

For new Friends of RAA and a reminder for everyone else, there is a procedure for Take-In and it does help ensure speedy processing.

Take-In Fridays we open at 9am and close at 7pm. If you are able to get to the gallery by 6.15pm for Take-In it would be appreciated. It takes a while to fill out the forms, find numbers for wall art, sort out jewelry cases (which always need a quick clean) and to unload all the table pieces and pay. It becomes a long day for everyone working in the gallery that day and they need to go home as well!

The Inventory Form is on our website, under Friends of RAA, forms. There you can complete the form at home, save it to your computer, and print off a copy to bring with you. Any last minute alterations can be made in the gallery.

Ideally, this is the procedure for Take-In and I know it gets confusing if you are new and have no idea of the routine.

Take your art and forms into the East Gallery (classroom gallery) where tables, forms and numbers are set out and there a Take-In crew ready to help.

Ask one of the Take-In crew to sign your inventory form once you have completed it, attached the numbers etc to your art.

Then come into the West Gallery and sign up for sitting in the gallery, sign out the work from the last show (if you entered it).

Lastly, pay the coordinator working at the computer.

These are the 2 busiest shows in the year with large number of artists, over 60 of us, bringing in art and it does take a while to sort out forms, chat with people, find a sitting time etc...

If you are unable to come to Take-In contact the gallery coordinators (909) 792 8435 and they will try to help you collect your art and drop off art for the next show.

Take-In reminders will also be on our Facebook page <https://www.facebook.com/RedlandsArtAssociation/>. If you haven't already checked out the page, pop over, take a look and "like" it. There are photos of art in the gallery, an up to date "Events" list of forthcoming events such as classes and receptions, and news from other art organizations.

— Liz Coviello, RAA President

Friday November 18th is Christmas Tree Take-In!

Yes, it's just 4 weeks away! This is an invitation for all Friends of RAA to decorate the tree with up to 10 handmade or decorated Holiday Ornaments and small gifts to be sold in the gallery. As with any sale we ring the artist if a piece sells and the artist is welcome to replace it with another ornament. The Christmas Tree will be up on the 18th November and Friends of RAA are welcome to come in on the Friday 18th November between 11.30am and 4pm. The fee will be \$5. Last year we sold over 100 ornaments and small gifts from the tree. Again there will be a table set aside in the East Gallery for some "under the tree" gifts as well, such as scarves and bulkier items along with a basket for Christmas cards.

— Liz Coviello, RAA President

Opening Receptions

I wish you all could have been at Linda Willason's and Sheila Leblanc's Featured Artist Reception yesterday. Lots family, friends and Friends of RAA stopped by to look at their show and the main show hanging in the gallery and they took the opportunity to sample the delicious food offerings, the chocolate sponge was to die for...

In the same way Opening Receptions for the main shows are just as important, it's a chance to see the new show, socialize with other artists, and for new Friends of RAA to meet those of us who have been there longer. There are also friends of RAA who are unable to attend because they no longer drive and I am sure they would love a lift to see the show.

— Liz Coviello, RAA President

Creativity starts here.

Save the Date & Call for Ceramic Artists!

Join us on December 3rd, from 10am-4pm for a holiday open studio tour. We are currently inviting ceramic artists in the RAA, who reside in Redlands, to open their studios to holiday shoppers and art lovers. This is a great way to sell work and show off your space. I've been fascinated to see how artists convert rooms, sheds, backyards and garages into places to be creative. You are inspiring and can help others see that it can be done, no matter what your circumstances!

Please contact Lisa Tucker to be included on the tour lisa@tuckerworkstudio.com The deadline is very soon: Thursday, October 20th. Include a photo of your work and a short bio. We will share a list of participating artists and photos/map in next month's newsletter.

— Lisa Tucker

Holiday Ornament Classes

Are you interested in making some "different" holiday ornaments to sell, keep or give as gifts? Then we have two special Saturday morning workshops for you.

Debi Bishop is holding an **"Assemblage" Holiday Ornament Class** Saturday 5th November. Have you seen her stunning Assemblage, altered art fridge magnets, small decorations in the gallery? Stop by and take a look. She has also developed a painting technique she is prepared to share; it sounds like so much fun. Fee \$65 or Friend of RAA \$50.

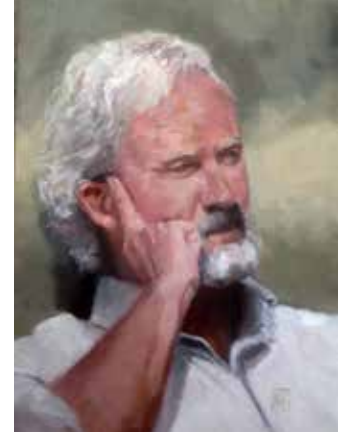
Ruth Woods is holding her second **Fused Glass Workshop** Saturday 12th November and this time it will be for holiday ornaments. The glass tiles people made in her first class were fabulous. You'll learn how to cut glass and prepare it ready for fusing. Ruth fuses the glass in her own kiln and then returns the finished pieces to the gallery for collection. Fee \$65 or Friend of RAA \$50.

There is a small materials fee for each workshop.

Details of both classes are on the website and on Facebook. You can call the gallery to book your class or stop by the gallery.

If you are interested in a different art class in the gallery, that we don't already offer, then please contact us.

— Liz Coviello, RAA President



Monthly Program – Tuesday, October 25

Did you know it was free and open to everyone?

On Tuesday 25th October at 7pm Martha Cowan is the speaker; she will be demonstrating "portraiture" in oil and talking about her method. As a follow-up to her program she will be offering a workshop on Saturday 29th October from 9 – 1pm \$65 or \$50 for Friends of RAA. The following week she will be offering two 5 week classes on Wednesdays: Portraiture Class in Oils and Painting the Still Life Class. See the website or Facebook for further details or call the gallery (909) 792-8435.

Is there an artist you'd like to hear talk about their work? Then please contact the gallery and we will see what we can do. Many thanks to everyone who helps set up and clear up after the monthly programs.

— Liz Coviello, RAA President

Survey

Did you complete the online survey last month? You are an important part of Redlands Art Association and it is great to get your feedback. The survey can be found online here: <http://tinyurl.com/raaquestions>. For those people without a computer, there are a few printed surveys in the gallery.

— Liz Coviello, RAA President



Creativity starts **here.**

**All Featured Artist Shows and receptions are held at the gallery, located at 215 East State Street, Redlands.
Open Monday through Saturday, 11 AM to 4:30 PM.**

Featured Artists: Sheila LeBlanc and Linda Willason

Oct. 8 to Oct. 28

The English mother-daughter duo of Sheila LeBlanc and Linda Willason will be the featured artists on Saturday, October 8th and will have a reception from 2pm to 4pm. Both have been inspired by their love of England and equally, their love for Redlands. The show runs from Oct. 8th to Oct. 28th, with an opening reception October 8th from 2 to 4 pm.

Sheila LeBlanc has been an artist for over 40 years. She paints in oils and watercolors and is mostly inspired to paint landscapes. She has had numerous "one-woman" shows among her accomplishments across many countries. Sheila has also been juried into many art shows including multiple entries into Redlands Art Association's "Mini-Show". She has won numerous awards over her long artistic career. While in Panama, she became well known for her sea-shell watercolors. These are currently owned by people all over the world.

Having studied with a variety of well known artists, Sheila is currently painting with Chick Curtis. Her favored painting partner is now her eldest daughter, Linda.

Linda, having grown up around her mother's art, has developed a love for art in general. Much to her surprise and the delight of Sheila, she started to paint about 4 years ago. It happened quite by accident. Linda accepted a ticket from a friend to a painting event. She learned the basics of pastels and instantly fell in love with the medium. At that point, she was full speed ahead! Taking classes with Anneli Pendley and Patricia Rose Ford, Linda has progressed and really enjoys exploring different subject matters. She creates landscapes, flowers, animals and scenes of Redlands with her pastels.

Linda and Sheila's vacations together now consist of finding new scenes to capture and places to paint. Finding beauty always inspires new artwork!

— Linda Willason



Featured Artists: Mary Grinyer

Oct. 25 to Nov. 19

Mary, a long time member of the Redlands Art Association, is excited to be the Featured Artist from October 29 through November 19. The theme of the show is "The Heart and More..." Her new three dimensional ceramic hearts will be shown for the first time. The heart has been a theme of Mary Grinyer's art for many years. She began doing heart related art when her Father had a successful open heart surgery. The heart can represent many things: the physical heart which keeps us alive, the emotional seat of a person's thoughts and emotion, or the central or innermost part, the essence of something. This show will explore heart related themes as well as presenting several sculptures and ceramic pieces. Ceramic heart pieces include "Mending Heart," "Ruptured," "Gift Wrapped," and works that present the heart as a decorative item.



An interest in ceramics began for Mary at the Goeske Senior Center in Riverside after she retired. She enjoyed working there and within a few months started taking beginning ceramics at Riverside City College with John Hopkins. Since then she has attended a series of classes in ceramics and sculpture with Stephen Horn at the college. Stephen Horn inspires students to experiment and often asks us to try it and see what happens. They experiment with forms, oxides, slips, glazes, printing on clay and multiple firing methods.

Mary Grinyer is a member of the Redlands Art Assn., Riverside Art Museum, Riverside Community Art Assn. and a resident of Riverside, CA. She is a graduate of Ramona High School and has an AA in Art from Lake Tahoe Community College. She has continued to work at the Goeske Senior Center ceramic group and now volunteers to teach hand building ceramics to interested seniors. The Clay Yard in Ontario, CA is her newest venture. She had studio space there for several years at Ceramic Services until it closed at the end of May. Eleven studio members, including Mary, purchased the business. They feature studio memberships, classes, firing services (including Raku), clay pugging, and they sell clay. She still maintains a studio space there.

Featured Artist: Aida Marini Schneider

Nov. 19 to Dec. 19 •
Opening Reception: Sun.,
Nov. 20 from 2 to 4 p.m.

"I'm looking forward to exhibiting at the RAA gallery as the featured artist for November 19 through December 9. The paintings from this series "Innerscapes" represent my personal interpretation of the surrounding desert and mountains in mixed media on cradled hardboard panels.

I'm a longtime Redlands resident and member/volunteer of RAA. Until recently my husband and I traveled nationally, exhibiting and selling at top juried art festivals such as Old Town Chicago, St. Louis Art Festival and Sausalito Arts Festival. I served on the jury of selection at the Cherry Creek Art Festival and my painting "Tapestry 52" was chosen for the Festival's annual fundraising poster that year. Last May I was pleased to act as co-juror for the Redlands Festival of Arts.

The Desert Art Collection gallery in Palm Desert represents my work and will feature my paintings in March 2017 during Artwalk.

Join me at the opening reception 2 to 4pm, Sunday, November 20 at the RAA gallery, 215 E State Street.

— Aida Marini Schneider, www.aidamarinischneider.com



Featured Artist: Martha Cowan

December 31, 2016 to January 20, 2017

Martha Cowan's love of art began at about age 6, when her father spent time teaching her how to draw. She knew at this young age that she wanted to be an artist. After pursuing art through her school age years, she realized as a young adult that while she loved to paint, she wanted to have a career as a graphic designer.

Simultaneously, Martha pursued graphic design studies in college and oil painting with Cathy Shefer, a representational painter in Alta Loma. She graduated from Chaffey College, studied at Art Center College of Design for four years, and graduated with honors with a Bachelor of Fine Arts degree from California State University, Fullerton.



Martha's early career was in graphic design, but her primary interest has always been in painting with oils, and that is what she devotes her time to now. She has shown her paintings in many local

shows, including the Artists Council Exhibit at the Palm Springs Art Museum in 2016, as well as the Museum of American Illustration, New York, in 1989. Her paintings belong to many private collections. She has studied with Elin Pendleton, Carol Marine, Jennifer McChristian, David Leffel, and Joseph Todorovitch, from whom she has been learning for since 2010.

Martha has taught art at Orange County High School of the Arts, Chaffey Community College, San Bernardino Valley College, and Dona Merced Elementary School.

CONTINUED ON PAGE 7

Featured Artist: Martha Cowan

CONTINUED FROM PAGE 6

She is currently the art teacher for a private elementary school, and she teaches adult painting classes for the Redlands Art Association.

She is pursuing painting seriously, and is showing and selling her art whenever possible. She is an Associate member of the California Art Club.

My interest in portraits began about 10 years ago, when I joined a monthly portrait painting group at the Chaffey Community Art Association.

Gayle Stratford was the facilitator of this group. We met every month to paint from the live model. The group continues with another facilitator, and now it's held at the Chaffey Community Art Museum in Ontario. I



admire Gayle's work, and when I learned that she was a student of David Leffel's, I had the good fortune of attending one of his portrait workshops in 2013. Even though I admire both of these great artists, Joseph

Todorovitch is who I have been learning from fairly continuously since 2010. He has helped me evolve and improve so much over the last six years. It is to him I owe so much credit.

Artist Statement:

My portraits, like my other subjects, are meant to capture the essence of the person, while not showing every detail. I strive to paint from the heart and to portray the person the way I want the viewer to know them.

I work in oil on linen, smooth panel, or cotton canvas. I use a limited palette, as taught to me by Joseph, through the great Anders Zorn.

My demonstration on Tuesday, October 25, will be a portrait from a model.



Friends of RAA Committee Update

The committee is working hard to finish the reminder letters and as soon as they are done... look out for them in your email. To try and cut the cost of postage, we will be sending out emails, or you can just renew on line through the website and Pay Pal.

If you would like to assist this committee, you are welcome to contact me and I will pass your name onto them.

— Liz Coviello, RAA President

Youth Education

The RAA Youth Education schedule has 6 sessions each school year between Aug.-June. We are currently in B session. C session will start on Oct. 31st. There are Art Camps offered in the Winter, Spring and Summer. Classes are available M-F for ages 6 and up. Also, there are a few Saturday Seasonal classes coming up. (Oct.15 and Dec.10th) Please check the RAA website for Fall and Winter Children's Art classes.

— Suzanne Burke, Youth Education

MCAEEF

In the Spring, MCAEEF decided to be pro-active in getting Art Education to certain Redlands Elementary schools that do not have Art Enrichment through the the school district. MCAEEF is very pleased to have received grant requests from all 3 of these schools and approve them.

MCAEEF's first film of the Cinema Classics Film series did very well. The income from these films go directly back to the community by providing Art Programs in Redlands. MCAEEF gladly approved 3 grant requests in September and several more at the October committee meeting.

Just a reminder the season is well under way. There are still 3 movies to be screened at the Redlands Krikorian Theater. This week Tuesday 11th October "The Measure of a Man" with a Thursday afternoon screening on 13 October. All tickets are \$15 except for students (must show a valid I.D. card). The following movies make up the remainder of the Fall season:

- ◆ Tuesday 25th October "The Innocents" & Thursday 27th October.
- ◆ Tuesday 8th November "Our Little Sister" & Thursday 10th November

— Suzanne Burke, MCAEEF

Don't Forget to Renew Your Friendship with RAA!

To renew, go to: <http://redlands-art.org/friends/friends-of-raa-form/>

Or use this form below!



FRIENDS OF RAA CATEGORIES:

Life \$1,000
 Sponsor \$100 Individual \$50
 Family \$50 *first family member + \$10/additional member (within same household)*
 Student \$10 *Students must show valid school id.*

CIRCLE ONE

DONOR CATEGORIES:

Benefactor \$2,500
 Contributor \$1,000–\$2,499
 Sustaining \$500–\$999

FRIENDS OF RAA AND/OR DONATION FORM

Please fill in your information below and mail this form along with your payment to:

Redlands Art Association, 215 East State Street, Redlands, CA 92373

Questions? Call the Gallery at 909-792-8435

Name(s) _____ Date _____

Address _____

City _____ State _____ Zip _____

Phone (_____) _____ E-mail _____

Submitting your email address gives us permission to send RAA information via email, as the need arises.

Your website _____

For Friends of RAA: I am signing up as: ☐ **Renewing** Friend of RAA OR ☐ **New Artist** Friend of RAA OR ☐ Art Appreciator & Supporter

Artists: list the media you work in: _____

(Example: oil, watercolor, jewelry, ceramics, etc. List all you do.)

New Friends of RAA: The Association is entirely volunteer run. We rely on our Friends to be our Gallery Docents: greeters and salespeople. You will be asked to be a Gallery Docent (no experience necessary) to assist the Gallery Coordinators. The gallery is our showcase for sales and art classes. We are all promoting each other, art education and the visual arts in general, to the people of Redlands.

☐ I am interested in volunteering: ☐ Committee Work ☐ Teaching ☐ Fund-raising ☐ Gallery Docent ☐ As needed

Please apply to: ☐ Friends ☐ Art Center ☐ Donation ☐ Margaret Clark Art Education Enrichment Fund (MCAEEF)
 \$_____ + \$_____ + \$_____ + \$_____ = **TOTAL \$**_____

Paid by: ☐ Cash ☐ Check # _____, ☐ Debit or Charge: ☐ Visa ☐ MasterCard ☐ Discovery
 Card Expiration Date _____ Card Account Number _____ Signature _____

Order No. _____ ☐ Renewal ☐ New Please staple the receipt to this form and put in End-of-Day envelope.

